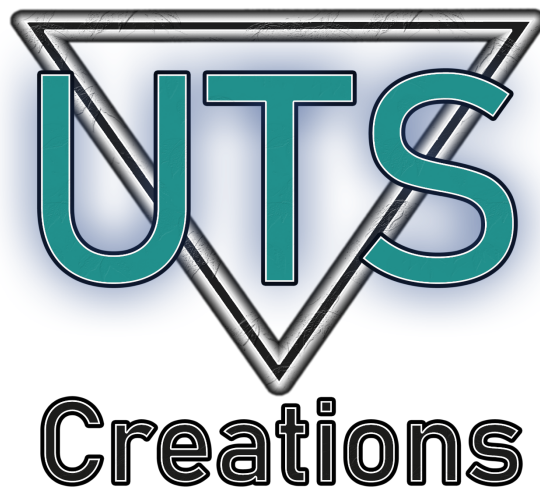


GE AC4400CW
OPERATING MANUAL
SOUTHERN PACIFIC EDITION



© 2023 UTS Creations

Preface

Due to the amount of issues with the first two releases of the pack, we have rescripted it from the ground-up. Therefore, the pack's version number has been reset to 1.0.

This is a realistic representation of a real life GE AC4400CW locomotive and as such is not recommended for novice Train Simulator users. Do **not** attempt any practices highlighted in this pack on a real GE AC4400CW.

This pack is **not** compatible with external controllers such as the RailDriver Desktop Cab Controller or Xbox One Controller.

This pack is **not** compatible with the game's save/resume functions.

This pack is **not** compatible with reskins or external modifications that aren't tailored to the nature of this pack.

Requirements

[Tehachapi Pass: Mojave - Bakersfield](#)

[GE GEVO-12 Sound Enhancement Pack](#)

[GE 7FDL16 Sound Enhancement Pack](#)

Installation

1. Copy the provided **Assets** folder to your RailWorks directory.
2. Run the file named **InstallSPAC44.bat** inside of your **Assets** folder.

Use In Scenario Editor

1. Click the **Object Set Filter** on the middle left pane.



2. On the drop down box, scroll down to **DTG** and click on it



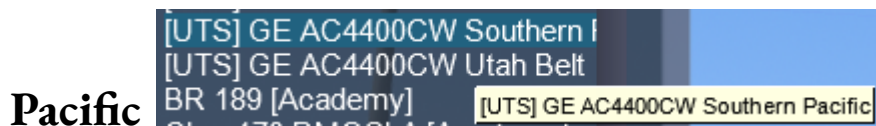
3. Scroll down and click the middle box on **Tehachapi**



4. On the middle left pane, click on **Engines & Tenders**



5. Scroll until you find **[UTS] GE AC4400CW Southern**



Liveries

SP 'Bloody Nose'



SP 146 'Daylight'



Features

- Traction Motor Cut-Out
- New Cast P3 and GE Steel Bell
- Exhaust dependent on RPM and load
- GE/Harris Locotrol
- Reworked AI behavior
- New cab camera featuring GE LocoCam
- Lagging IFD screens
- Revamped cab textures
- Clean cab radio (static)
- Cab door window
- Number board lighting
- Revised wiper animation
- Configuration file
- New Type-F coupler
- PCS functionality
- Scenario start initialization
- Scripted engineer/conductor
- SP 146 (Daylight)
- Fading light package

Cab Views

Engineer's Seat



Middle Man's Seat



Cab Views (continued)

Conductor's Seat



GE LocoCam



Keybinds

H / Shift + H - **Forward Headlights**

Ctrl + H / Ctrl + Shift + H - **Reverse Headlights**

Ctrl + Shift + S - **Step Lights**

I / Shift + I - **Isolation Switch**

Shift + A / Ctrl + Shift + D - **Distance Counter**

Y / Shift + Y - **AutoStart**

Ctrl + Q - **Alerter Override**

B - **Bell**

L - **Cab Light**

Backspace - **Emergency Brake**

W / S - **Reverser**

A / D - **Throttle/Dynamic Brakes**

;/ ' - **Air Brakes**

[/] - **Locomotive Brakes**

/ - **Handbrake**

Q - **Alerter Reset**

X - **Sander**

Spacebar - **Horn**

Ctrl + Shift + L - **Light Casting**

Shift + R - **Reverser Key**

Keybinds (continued)

Ctrl + 1 - Traction Motor Cut-Out #1

Ctrl + 2 - Traction Motor Cut-Out #2

Ctrl + 3 - Traction Motor Cut-Out #3

Ctrl + 4 - Traction Motor Cut-Out #4

Ctrl + 5 - Traction Motor Cut-Out #5

Ctrl + 6 - Traction Motor Cut-Out #6

Ctrl + N - Number Board Lights

V / Shift + V - Wipers

Preparing the unit

1. Set the isolation switch to RUN
2. Insert the reverser key
3. Use the reverser to select the desired direction of travel
4. Release the auto brake
5. Notch up with the throttle

Traction Motor Cut-Out

Cutting in or out your traction motors results in a gradual increase or decrease of power. The amount of motors cut-in is displayed on the GE Locotrol display (Harris Box). A popup will also appear on the top right showing you which traction motor is cut in/out.

PCS (Pneumatic Control Switch)

When experiencing a penalty from an emergency brake application, the controls will set themselves automatically to recover. The brake must be in emergency, the reverser in center, the throttle in idle, and the train at a dead stop. You will receive a notification after 60 seconds of these conditions being met that the PCS has reset.

GE/Harris Locotrol

The GE/Harris Locotrol display sits above the left IFD on the desktop. It displays the following.

Traction - The amount of traction motors cut-in on the locomotive

Mn Res - The amount of air sitting in the main reservoir

Tr Eff - The amount of tractive effort the locomotive is putting out

Eq Res - The amount of air sitting in the equalizing reservoir

B Pipe - The amount of air sitting in the brake pipe

Br Cyl - The amount of air sitting in the brake cylinder

Flow - The amount of air going through the braking system at a given point

UNIT A - This does not change as there is no script for DPU fencing.

ISOLATE-RUN-START/STOP - The positions of the isolation switch.

GE/Harris Locotrol (continued)

Full Display

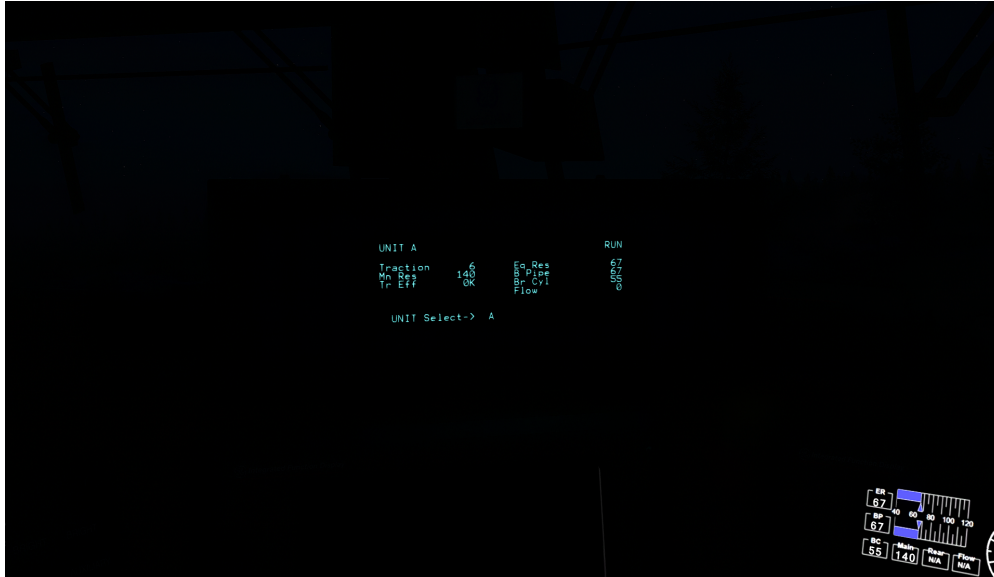


Isolation Switch States



GE/Harris Locotrol (continued)

Visibility at night



Configuration File

A configuration file is included inside of:

`Assets\DTG\Tehachapi\RailVehicles\Diesel\AC4400_SP`

and is called **AC44_Config.lua**. This can be opened inside of any text editor.

BellClapSpeed - sets the amount of time it takes between claps of the bell. The higher the time, the slower it goes.

BellLockBackSpeed - sets the time it takes to lock the bell back.

The higher the number, the later the lock back (max is 1).

CinematicHeadlightFlares - enables or disables the camera effect you would typically see when looking at bright lights. Set to **true** if you want them enabled.

SmokeIntensity - sets the smoke intensity. The higher the number, the thicker the smoke.

Credits

ngc - New handrails and logos in the cab

Searchlight Simulations - 7FDL16 enhancement pack

Schnauzahpowahz - Alpha/beta testing and important feedback
during development

Mitch Harvey - warning labels

Nyvi - Beta testing

We also want to thank you, the community, for encouraging us to make these projects happen. Your feedback has helped evolve our projects and we can't do this without you.