

RoadRailer



Simulations



CSX YN3B SD40-2 Repaint Manual

Notice Before Installing

This repaint pack requires the BNSF Locomotive Pack add-on, which is available on Steam here:

<http://store.steampowered.com/app/222581/>

The CSX YN3B SD40-2 Repaint comes with a VBScript file (labeled CSXYN3BSD40GEO.vbs) that automatically copies the GEO files from the default folders to its respective repaint folder. **The GEO files DO NOT come with the pack itself, as that involves piracy, which we tend to avoid.**

Before you begin installation, it is recommended that you backup your Railworks folder in case something goes wrong. Follow the instructions carefully, to ensure a smooth installation.

See "Installation" for instructions on how to install this pack.

Installation

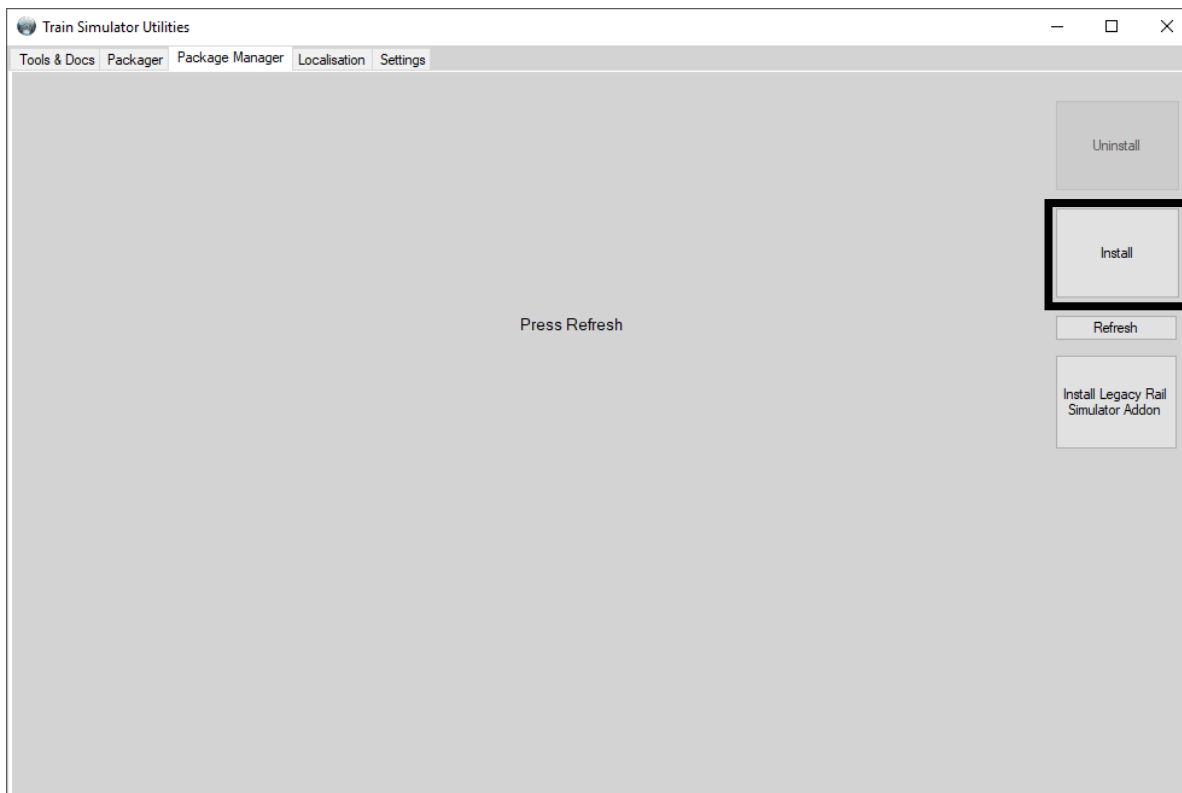
1. **First, launch the TS Utilities program from the Railworks directory**
(located in C:\Program Files (x86)\Steam\SteamApps\common\RailWorks).

If the system asks for permission by User Account Control, allow it.



2. **Under the Package Manager tab, click "Install".**
Locate the file "CSX YN3B SD40-2.rwp" in the main folder, and then click "Open".

The repaints (without the GEO files) will be installed automatically.

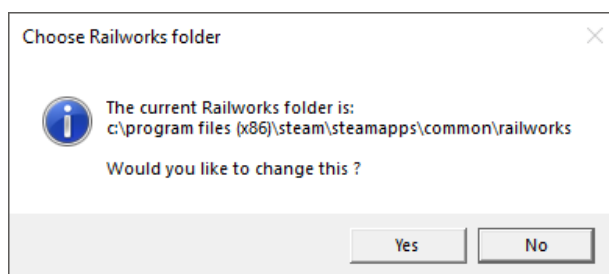


Installation

The next part of the installation is to copy the default engine and cab view GEO files from the default SD40 folders and paste them into the respective repaint folders. Thanks to RWA member Chacal, he was kind enough to create a VBScript that'll do the "copy and paste" process for you, so manual installation is no longer necessary.

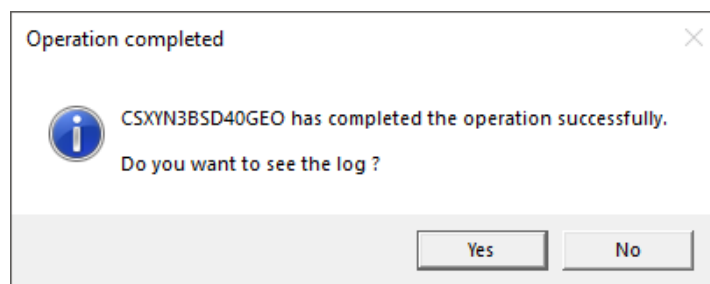
3. **Locate and run the "CSXYN3BSD40GEO.vbs" script in the "Installation Files" folder** (a Read Me for the VBScript is included with it).

Upon running, it will first ask for your Railworks directory:



Once you confirm the correct directory, the script will automatically copy the GEO files from the default folder to its respective repaint folder (CSX).

If successful, you should get a "Success" message, like this:



Once installation is complete, launch Railworks, create a custom quick drive consist (or go to the scenario editor and check SD40BnsfPack01), and if the repaints show up, and you're all set!

Information

The EMD (Electro-Motive Diesel) SD40-2 was originally built from January 1972 to July 1984 in the United States, February 1986 in Mexico, 1988 in Canada, and October 1989 in Brazil. The locomotive was similar to the original SD40, but with some electrical improvements. Despite other high-powered EMD locomotives made during this time, the reliability and versatility of the 3,000-horsepower engine made this the best-selling model in EMD's history. Today, most of them are still in service, either original or rebuilt.

CSX inherited many SD40-2s from its predecessor railroads: Baltimore & Ohio (20 units), Clinchfield Railroad (5 units), Louisville & Nashville (191 units), and Seaboard Coast Line (36 units). The L&N and SCL would later merge to form the Family Lines System, which became the Seaboard System in late 1982, before it merged with the Chessie System to form CSX Transportation. CSX would inherit older generation SD40s from its predecessor railroads as well, that would eventually be converted to Dash 2 standards. CSX would also inherit a bunch of SD40-2s after the Conrail split in 1999.

CSX's SD40-2's fleet had begun to shrink since they started the SD40-3 rebuild program in 2010, but their SD40-2s that had not gone through the Dash 3 rebuild still roam the rails today in local, and sometimes mainline freight duties.

Locomotive Specifications:

Builder: General Motors Electro-Motive Division (EMD)

Prime Mover: EMD 645-E3 16-cylinders

Power Output: 3,000 HP (2,240 kW)

Weight: 368,000 lbs

Length: 68ft and 10in

Braking: Dynamic and Air Braking

Maximum Speed: 65 MPH

(Sources: TheDieselShop and Wikipedia)

What's Included



CSX YN3B SD40-2

Credits

Repaint Developed by

Martin Ashwill

Copyright Notices

CSX, along with the CSX "Boxcar" logo and paint schemes, are trademarks of CSX Transportation.

DTG's Train Simulator is owned by Dovetail Games.