



Simulations



NS Primer Pack Manual

Notice Before Installing

This repaint pack requires the Norfolk Southern Coal District Route add-on, which is available on Steam here:

<https://store.steampowered.com/app/258654/>

The NS Primer Pack comes with a VBScript file (labeled NSPrimerPackGEO.vbs) that automatically copies the GEO files from the default folders to its respective repaint folders. **The GEO files DO NOT come with the pack itself, as that involves piracy, which we tend to avoid.**

Before you begin installation, it is recommended that you backup your Railworks folder in case something goes wrong. Follow the instructions carefully, to ensure a smooth installation.

See "Installation" for instructions on how to install this pack.

Installation

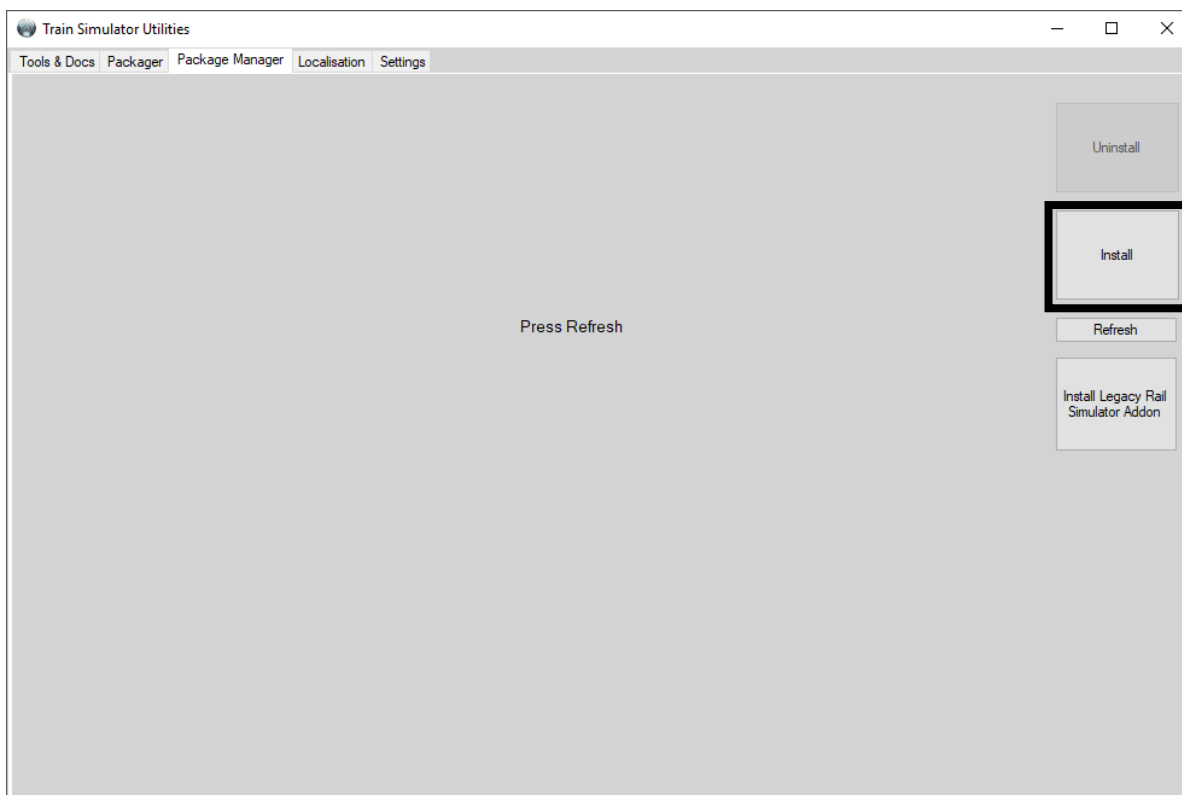
1. **First, launch the TS Utilities program from the Railworks directory**
(located in C:\Program Files (x86)\Steam\SteamApps\common\RailWorks).

If the system asks for permission by User Account Control, allow it.



2. **Under the Package Manager tab, click "Install".**
Locate the file "NS Primer Pack.rwp" in the main folder, and then click "Open".

The repaints (without the GEO files) will be installed automatically.



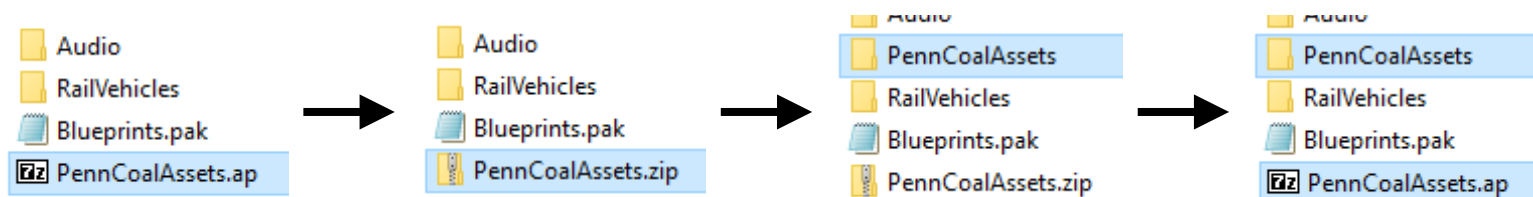
Installation

The next part of the installation is to copy the default engine and cab view GEO files from the default ES44AC folders and paste them into the respective repaint folders. Thanks to RWA member Chacal, he was kind enough to create a VBScript that'll do the "copy and paste" process for you, so manual installation is no longer necessary.

However, because the NS Coal District add-on assets are stored in an .AP file, the installation process becomes a bit more difficult, at least for newcomers. So, you'll need to extract the PennCoalAssets AP file before going any further.

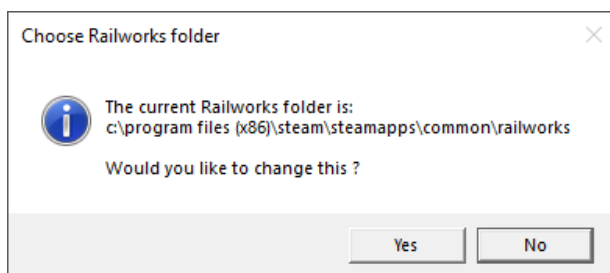
3. Extract the PennCoalAssets AP file by changing its file extension to ZIP and extracting it normally.

First, you'll need to change the PennCoalAssets.ap file into an ordinary zip file by renaming the file extension from .ap to .zip. Then, extract the ZIP file. With the entire PennCoalAssets folder extracted, you can rename the ZIP file back to an AP file.



4. Locate and run the "NSPrimerPackGEO.vbs" script in the "Installation Files" folder (a Read Me for the VBScript is included with it).

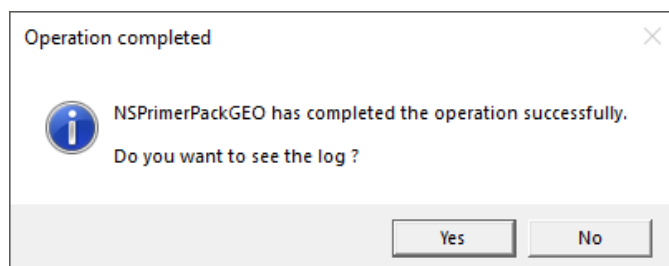
Upon running, it will first ask for your Railworks directory:



Once you confirm the correct directory, the script will automatically copy the GEO files from the default folder to its respective repaint folders (7519_Primer, 7697_Primer).

Installation

If successful, you should get a "Success" message, like this:



Once installation is complete, you can now delete the extracted PennCoalAssets folder (not the AP), launch Railworks, create a custom quick drive consist (or go to the scenario editor and check PennCoal), and if the repaints show up, and you're all set!

What's Included



NS ES44DC #7519 (in Gray Primer paint)



NS ES44DC #7697 (in Gray Primer paint)

Credits

Repaints Developed by
Martin Ashwill

DTG's Train Simulator is owned by Dovetail Games.