



# ***Simulations***



## **Fictional UP Altered Heritage Repaint Pack Manual**

# Notice Before Installing

This repaint pack requires the UP SD70ACe Loco add-on, which is available on Steam **here**:

<https://store.steampowered.com/app/208356/>

The Fictional UP Altered Heritage Repaint Pack comes with a VBScript file (labeled FictionalUPHeritageGEO.vbs) that automatically copies the GEO files from the default folders to its respective repaint folders. **The GEO files DO NOT come with the pack itself, as that involves piracy, which we tend to avoid.**

Before you begin installation, it is recommended that you backup your Railworks folder in case something goes wrong. Follow the instructions carefully, to ensure a smooth installation.

See "Installation" for instructions on how to install this pack.

# Installation

1. **First, launch the TS Utilities program from the Railworks directory**  
(located in C:\Program Files (x86)\Steam\SteamApps\common\RailWorks).

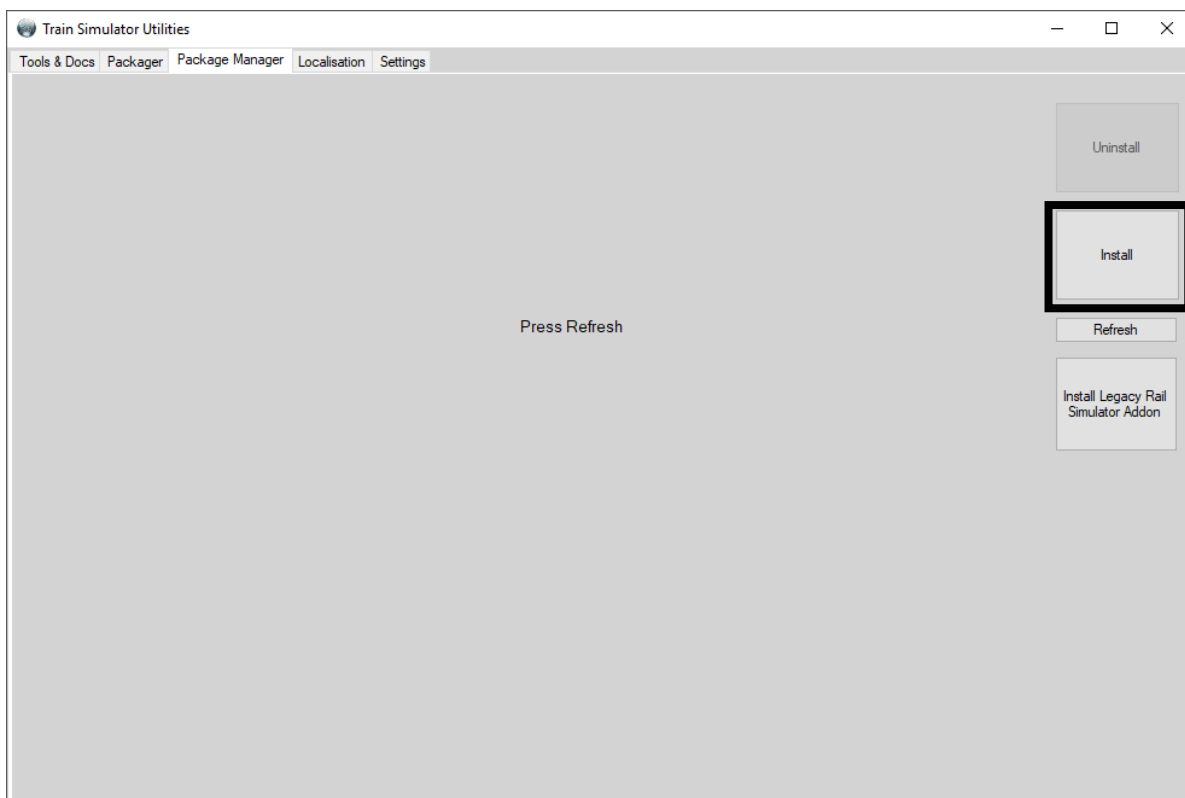
*If the system asks for permission by User Account Control, allow it.*



2. **Under the Package Manager tab, click "Install".**

Locate the file "Fictional UP Altered Heritage.rwp" in the main folder, and then click "Open".

The repaints (without the GEO files) will be installed automatically.

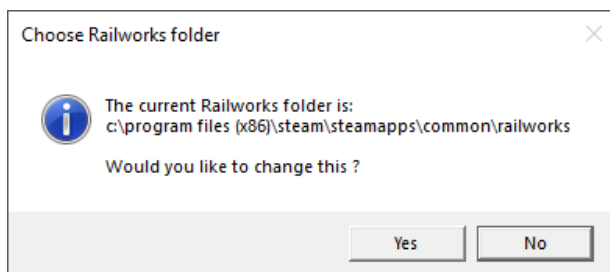


# Installation

The next part of the installation is to copy the default engine and cab view GEO files from the default SD70ACe folders and paste them into the respective repaint folders. Thanks to RWA member Chacal, he was kind enough to create a VBScript that'll do the "copy and paste" process for you, so manual installation is no longer necessary.

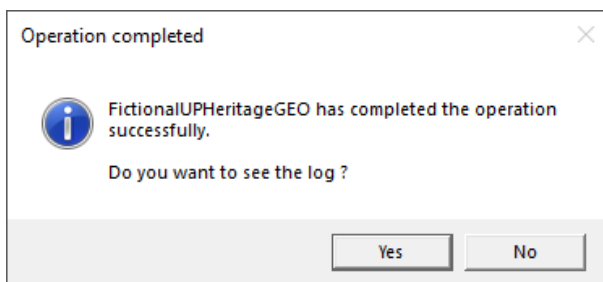
### 3. **Locate and run the "FictionalUPHeritageGEO.vbs" script in the "Installation Files" folder** (a Read Me for the VBScript is included with it).

Upon running, it will first ask for your Railworks directory:



Once you confirm the correct directory, the script will automatically copy the GEO files from the default folder to its respective repaint folders (1982, 1983, 1988, 1989, 1995, and 1996).

If successful, you should get a "Success" message, like this:



Once installation is complete, launch Railworks, create a custom quick drive consist (or go to the scenario editor and check SD70Pack01), and if the repaints show up, and you're all set!

# What's Included



**UP SD70ACe #1982 "Alternate Missouri Pacific"**



**UP SD70ACe #1983 "Alternate Western Pacific"**



# What's Included



**UP SD70ACe #1988 "Alternate Missouri-Kansas-Texas"**



**UP SD70ACe #1989 "Alternate Rio Grande"**

# What's Included



**UP SD70ACe #1995 "Alternate Chicago & North Western"**



**UP SD70ACe #1996 "Alternate Southern Pacific"**

# Credits

## **Repaints Developed by**

Martin Ashwill

## **Copyright Notices**

Union Pacific, along with the Union Pacific, Missouri Pacific, Western Pacific, Missouri-Kansas-Texas, Denver & Rio Grande Western, Chicago & North Western, and Southern Pacific logo and paint schemes, are trademarks of the Union Pacific Railroad.

DTG's Train Simulator is owned by Dovetail Games.